



Right **TEMPERATURE** Worldwide



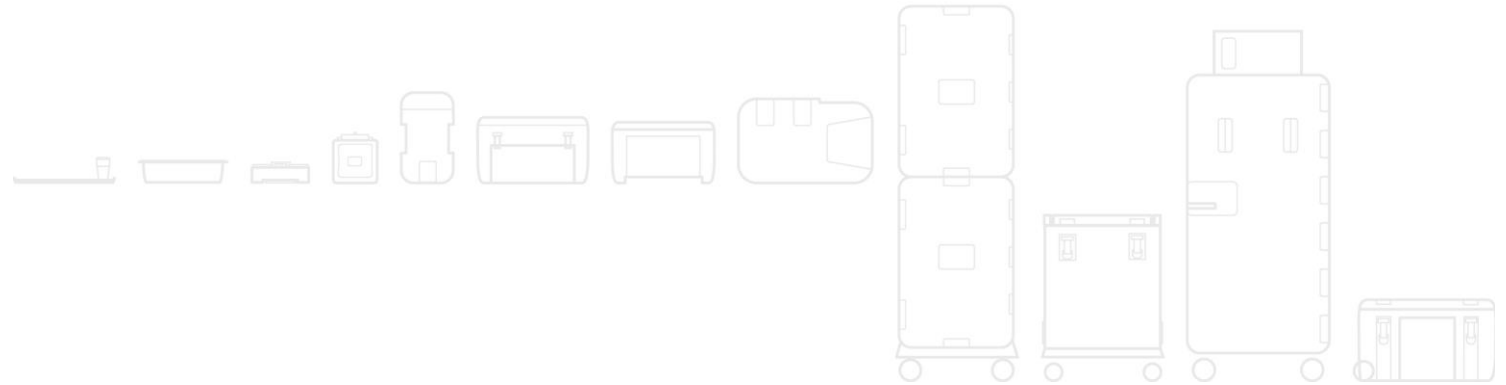
Read the correct use and maintenance manual, available here:

en.melform.com/section/manuals



Cargo line

Use and maintenance manual





INDEX

1. INTRODUCTION

- 1.1 Field of use
- 1.2 Consulting the manual
- 1.3 Warranty

2. WARNINGS

- 2.1 General recommendations

3. PRODUCT USE

- 3.1 Using the product for the first time
- 3.2 Instructions for using the handle
- 3.3 Instructions for the preparation of the container before loading
- 3.4 Transport instructions

4. MAINTENANCE

- 4.1 Washing instructions
- 4.2 Maintenance instructions
- 4.3 Routine maintenance
- 4.4 Extraordinary maintenance
 - 4.4.1 Seal replacement
 - 4.4.2 Castor replacement
 - 4.4.3 Replacing the closing handle
 - 4.4.4 Thermometer replacement
- 4.5 Welding instructions

5. PRODUCT DISPOSAL

- 5.1 Packaging
- 5.2 Product



1. INTRODUCTION

1.1 Field of use

The isothermal container Cargo was designed and built for the temperature controlled transport of perishable products, in full respect of the cold chain. It is recommended for all transportation stages, from the collection in the field, to the food processing industry, up to the logistic distribution platform and the transfer of the product to the refrigerated cabinets of the supermarket.

1.2 Consulting the manual

This manual has been arranged in such a way that the user can find all the information needed for quick and easy maintenance. Consequently it must be made available to maintenance staff and operators at all times.

The instructions must be read carefully before using the product.

1.3 Warranty

The product is guaranteed against manufacturing faults for twelve months from the date of purchase, as long as:

- it has always been used in compliance with the manufacturer's instructions
- it has not been damaged by improper use

The warranty does not cover accidental damage during transport, due to negligence, improper use or failure to observe the contents of these instructions for use. The warranty shall be voided if the product is repaired or tampered by unauthorised third parties.

Contact your local dealer or the Melform sales department for assistance or for the supply of original spare parts.

Cargo is an exclusive Melform product.

The manufacturer reserves the right to change the features of the models at any time without notice. Variations in color shades are possible.

2. WARNINGS

The container is built to the state of the art.

All requirements for the safe and correct operation of the container have been satisfied.

The manager of the user company is recommended to train the staff in order to ensure that the container is destined exclusively to the use for which it has been designed and used correctly as indicated in these instructions.

2.1 General recommendations

- The use of the container must comply with the manufacturer's instructions. The function of the Cargo container is to ensure the retention of the product temperature during transport. Different functions or operating modes should be avoided.
- The product is guaranteed for use from -30 °C to +85 °C.
- This product is intended for the exclusive use of adults and trained personnel; keep away from the reach of children.
- Handle with care during transport and follow the instructions provided in this manual on the opening/closing of the cargo. It is recommended the use of individual protection devices, such as work gloves during opening and closing doors operations to avoid risks of pinching.
- Periodically check the condition of the container, removing it from use if broken, damaged, cracked, to avoid not adequate isothermal performance and that the material might pollute the goods transported. Also check for the correct closing of the door.
- Do not bring the container into contact with sharp or pointed surfaces or sources of direct heat (naked flames).
- Warning: there is no opening from inside the door: avoid closing people / animals inside the Cargo.
- The ATP certificate with relative plate (available on request) has a duration of 6 years and can be renewed at the relevant offices for another 3 years.
- Any modification made after purchase on a container with ATP approval immediately cancels its validity.

IMPORTANT:

The manufacturer declines all responsibility if the accident prevention standards in force are not observed by the user company.

3. PRODUCT USE

3.1 Using the product for the first time

The container was cleaned before leaving the factory. However, we recommend washing the container, following the instructions given in paragraph 4.1 "Washing Instructions" before using it.

3.2 Instructions for using the handle

1. With the left hand, grasp the handle on the left wall of the container.



2. With the right hand, grasp the handle in a position corresponding to the black lever, pushing it slightly forward.



3. With the thumb of the right hand, push forward the release button of the handle.



4. Release the button and open the handle by pulling it toward you.



5. Return the handle to the closed position, pushing it forward.





3.3 Instructions for the preparation of the container before loading

Normally there is no need to precondition the container; if you want to do so, leave the container open inside a cold room for a long enough time. This operation is recommended if the container has been exposed to high ambient temperatures or to the sun heat.

3.4 Loading instructions

- Open the container, as indicated in the instructions for use of the handle (paragraph 3.2)
- During the loading and unloading phases, we recommend that you apply the wheel brakes, if present.
- The purpose of the Cargo container is not to cool the products, but to guarantee that they retain their temperature. Therefore, it is mandatory to load the goods inside the container at the required temperature.
- It is good practice to load the container for at least 50% of the available volume, although the optimal preservation of the temperature is obtained at full load.
- Since during the loading phase food disperse much of their thermal energy, it is recommended to carry out the operation in the shortest possible time, immediately closing the door.
- In order to extend the temperature retention times in chilled or frozen condition, increasing the margins of safety within which to work, it is recommended the use of eutectic plates.
- The maximum load recommended for the container with wheels is 700kg for Cargo 370, 500 and 550 kg for Cargo 780, 1000, 1300, 1300TW
- It is possible to separate the load inside the container through the use of intermediate grids (1 grid for Cargo 500, 3 grids for Cargo 370, 780, 1300TW, 4 grids for Cargo 1000; for Cargo 1300 intermediate grids are not provided).
- For Cargo 500, it is possible to arrange the food in Gastronorm pans, using the appropriate adaptors (upper and lower). Adaptors and Gastronorm pans are available on the catalog.

- To transport the fish, various solutions are available to prevent the ice meltwater contained in the fish transport boxes and an expansion cap to allow the evacuation of the waste water.
- To close the container, grasp the handle on the left side of the container and, with the right hand, act on the closing handle.

3.5 Transport instructions

- Before handling the container, make sure that the door is closed.
- Use the appropriate handles to handle the container provided with wheels. During the moulding process a backing plate is embedded in the polyethylene. It makes the wheel attachment resistant to the movements on uneven surfaces.
- Move the container on wheels using the handles.
- It is preferable to pull the container on wheels, instead of pushing it. Handling must be carried out by personnel trained and informed of the risks involved.
- Move the container equipped with pallets by means of suitable lifting systems (transpallets, forklifts).
- When moving the container, pay the utmost attention to avoiding collisions with people or things.
- Do not use the container on very inclined surfaces with manual handling. Always use lifting systems suitable for this purpose.
- When making multiple deliveries using the same container, avoid leaving it open as this will cause considerable heat dispersion.



4. MAINTENANCE

4.1 Washing instructions

Regularly clean the container inside and out, observing the following instructions:

- Water temperature must not be higher than +85 °C.
- Do not use metal or synthetic scouring pads, only soft brushes with natural or plastic bristles.
- Do not use abrasive powder, ammonia, acid or solvent.
- Use soap based solutions or chemical cleaners, provided that they do not contain acetone, turpentine, white spirit, esters of acetic acid, ethanol, isopropanol and alcohol with higher molecular weight.
- All the parts of the container subjected to washing must always be thoroughly rinsed. Is it possible to use high pressure water jets.
- For hygienic use, when washing is finished, always dry the container using warm air or disposable paper (never reusable cloths).

4.2 Maintenance instructions

Melform-Bonetto srl suggest regular maintenance of the container to prevent possible breakage, increase its life and preserve its operation.

We recommend:

- maintenance of the container, carried out by qualified technicians at least once a year.
- use of original spare parts at all times.

Contact your local dealer or the Melform sales department for assistance or for the supply of genuine spare parts.

Below are the instructions on how to disassemble and reassemble any components which may be replaced.

4.3 Ordinary Maintenance

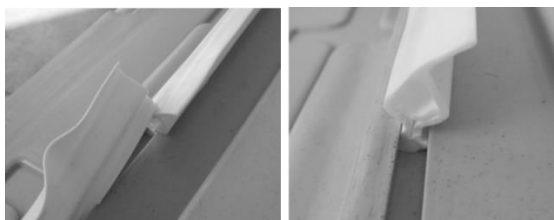
PART TO BE CHECKED	FREQUENCY	TYPE OF CHECK
Castors	3 months	Lift the container and check for correct rotation, pivoting, cleanliness, absence of breakage and tread wear.
Door	6 months	<ul style="list-style-type: none"> •The door opening and closing operations should be smooth, without friction. Lubricate the moving parts with spray silicone or teflon, in order to reduce friction and extend the life of the mechanical parts • Check the correct operation of the latch handle • Check for wear the seal on the whole perimeter of the door. •Check for wear the door stop insert • Check for wear the card holder (if present)
Door stop	6 months	Check the correct door hooking to the body in open position. Check for any deformation or cracking.
Bolts, screws, pins, rivets	6 months	Check for the presence of all the hardware included.
Body and door: appearance check	6 months	Check for breakages on body and door. Any breakages must be restored as soon as possible by welding, to prevent the deterioration of the inner insulating material (paragraph 4.5 "Instructions for welding").
Moving parts	6 months	Lubricate all parts in motion, to avoid any friction.
Thermometer (if present)	3 months	Verify its correct operation.

4.4 Extraordinary maintenance

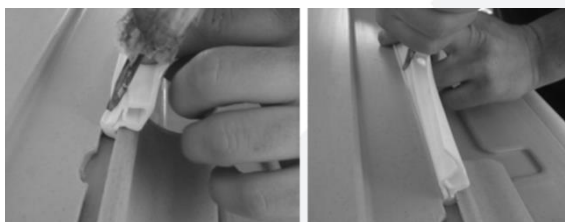
4.4.1 Seal replacement

Replace the seal as follows:

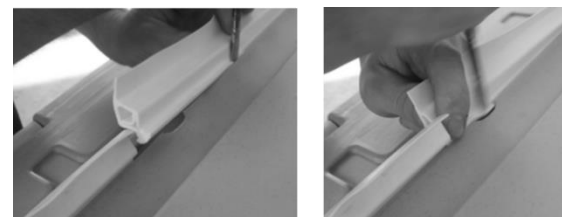
1 - Remove the seal (A) from its seat (inverted T-shaped groove), by pulling it outwards with the pressure of your fingers. Begin to pull out the seal starting from the junction area at the bottom left of the door.



2 - Insert the new seal using a flat, not sharp, tool (e.g.: slotted screwdriver). Lubricate along the seal to ease insertion and start to insert the seal starting from the junction area at the bottom left of the door.



3 - Cut the seal to the correct length, so that the two flaps match



4.4.2 Castor replacement

Replace the castors as follows:

1 - Place the container on the back

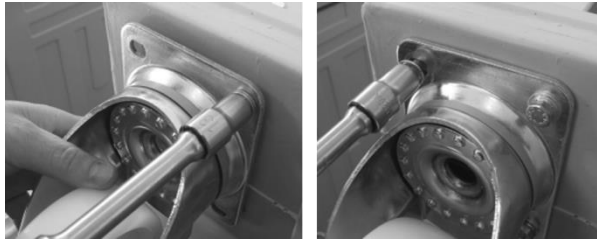
2 - Unscrew the M8 screws with their washers



3 - Remove the affected castor and replace it with the new castor



4 – Screw the M8 screws with their washers

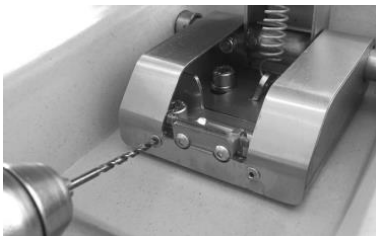


In the event of excessive tread wear, it is recommended the replacement of the four castors

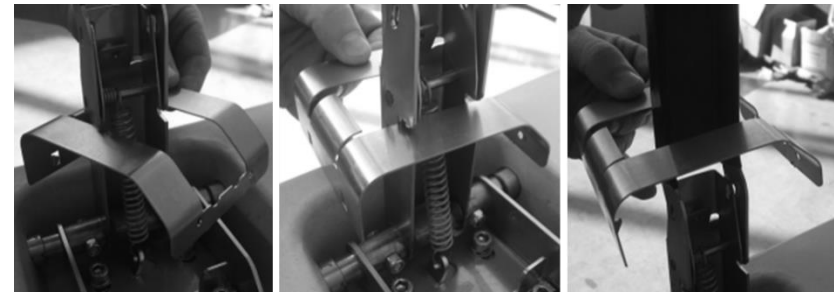
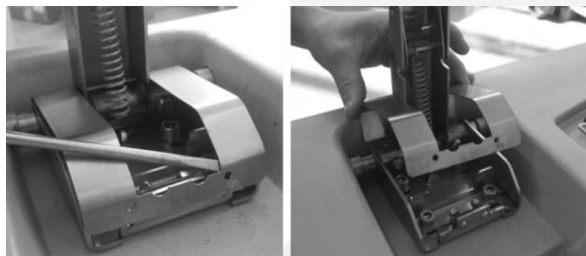
4.4.3 Replacement of the closing handle

Replace the closing handle proceeding in the following manner:

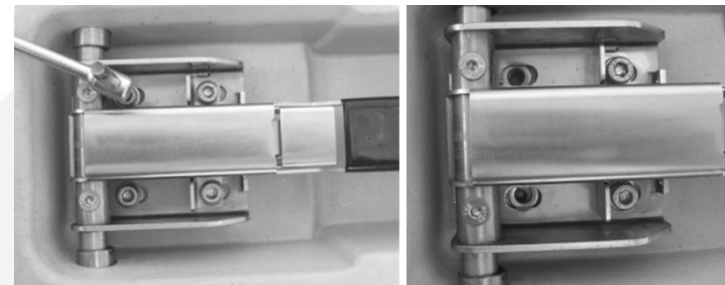
1 – Remove the rivets for steel 3.2 x10 using a drill and a 2.5-3mm drill bit for iron



2 – Remove the metal cover using a flat tool (e.g.: slotted screwdriver)



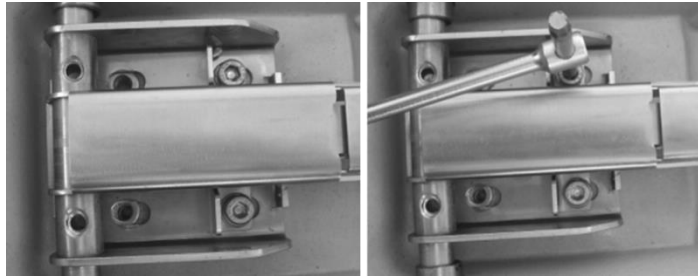
3 – Unscrew the 2 stainless steel capped head cap screws M8x16 with stainless steel groover washers (screws located on the left, next to the rod)



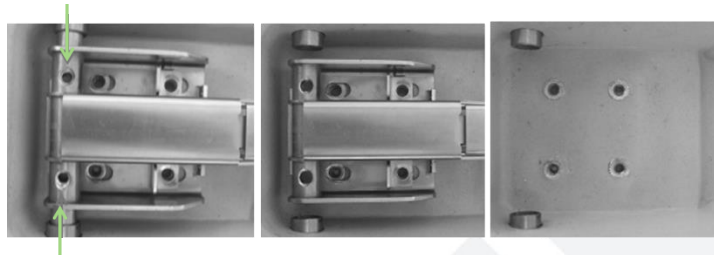
4 - Remove the two stainless self-locking hex nuts M6 on the rod and pull out the two stainless steel countersunk hex head screws M6x25



5 - Unscrew the 2 stainless steel socket head cap screws M8x16 with stainless steel groover washers (last two screws on the right).



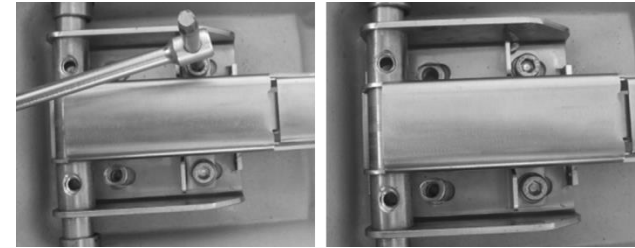
6 - Remove the two upper and lower rods of the door and pull out the stainless steel closure.



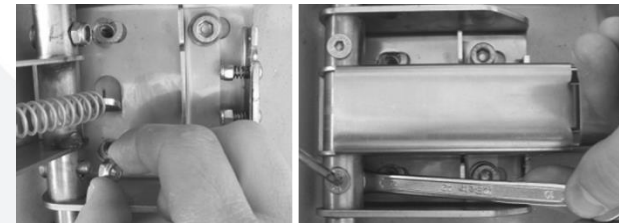
7 - Once you have removed the closing handle, replace it with a new handle and secure it in the reverse order to what is described above: place the closure in the specific seat and slide the upper and lower slots inserting them in the closure seat.



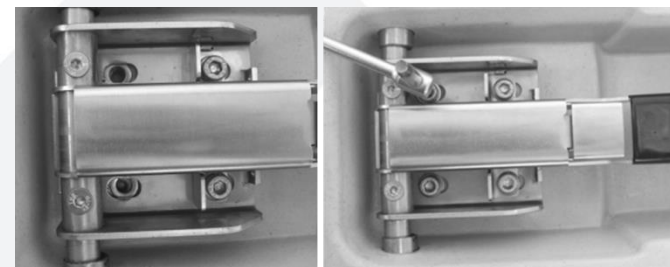
8 - Screw the 2 stainless steel socket head cap screws M8x16 with stainless steel groover washers (screws located externally, on the right).



9 - Insert on the rod the two stainless steel countersunk hex head screws M6x25 and tighten the two stainless steel self-locking hex nuts M6.

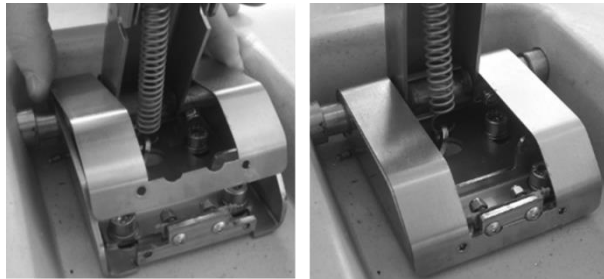
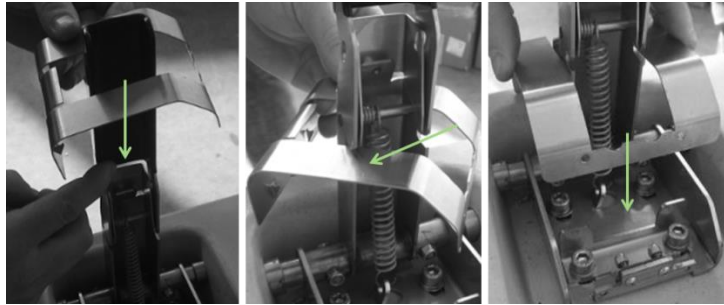


10 - Screw the 2 stainless steel socket head cap screws M8x16 with stainless steel groover washers (screws located on the left, next to the rod)

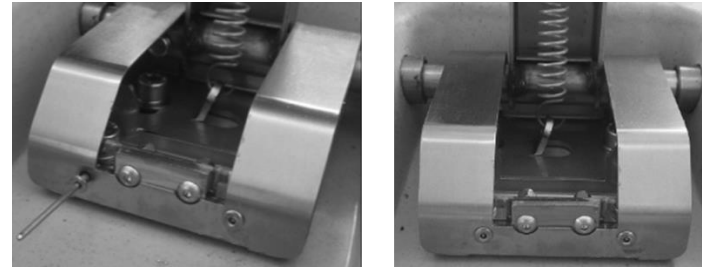
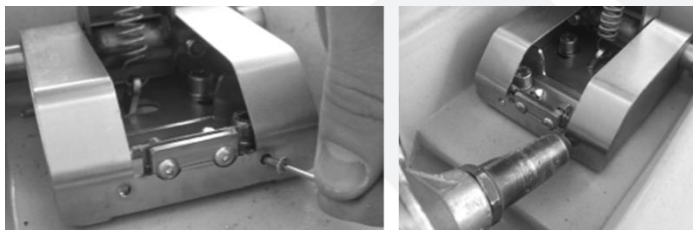




11 – Insert the metal cover



12 – Insert the rivets for steel 3.2 x10 using a riveting tool



4.4.4 Thermometer replacement

Replace the thermometer as follows:

1 – Unscrew the 3 stainless steel self-tapping screws 3.9 X 16mm with cylindrical head and cross cut and remove the thermometer from its seat. Remove the probe cable connected



2 - Enter a new thermometer, taking care to place the bulb of the probe in a position corresponding to the holes on the probe cover plate and tighten the three stainless steel self-tapping screws 3.9 X 16mm with cylindrical head and cross cut.

3 - If necessary, in order to correctly position the probe, remove the probe cover plate located on the inner part of the door. To do this, remove the 4 aluminium peel rivets 4.8x16mm using a drill and a 4.5 mm drill bit. Once you have correctly positioned the bulb of the probe, reposition the plate securing it with 4 aluminium peel rivets 4.8x16mm.

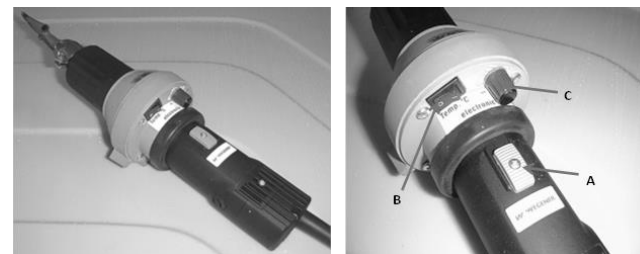


4.5 Welding instructions

To perform the welding of the walls in polyethylene we recommend that you use a continuous wire welding machine WEGENER (available on request), as follows:

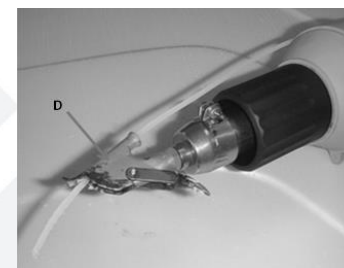
- 1 - Connect the mains plug of the welding machine to the 230V wall socket.
- 2 - Turn on the welding machine by setting the grey switch (A) to ON.
- 3 - Operate the resistances by setting the black switch (B) to ON.

4 - Adjust the thermostat by placing the red knob (C) at position 5.



5 - Bring near the parts to be welded. Place the nozzle of the welding machine in closed position in contact with the parts to be welded and join them with multiple junction points, by exploiting the jet of hot air.

6 - Turn back the nozzle and insert in the specific seat (D) the wire in polyethylene for welding.





7 - Place the nozzle in the vicinity of the weld area and allow it to deliver the melted polyethylene. The driving velocity of the welding machine is a function of the temperature set on the thermostat and the size of the part to be restored. Proceed until the area to be restored is completely saturated with melted polyethylene.



8 - To turn off the welding machine, position on the value 0 the red knob (C) of the thermostat, turn off the resistances by placing the black switch (B) to OFF, turn off the welding machine by placing the grey switch (A) to OFF and remove the mains plug from the 230V power socket.

9 - Let it cool for a few minutes the polyethylene layer deposited on the area to be welded.

10 - Remove the excess polyethylene deposited using a special deburring knife.



5. PRODUCT DISPOSAL

5.1 Packaging

The packaging material (cardboard, polyethylene film) is 100% recyclable. The user is responsible for disposal in observance of the local regulations.

5.2 Product

The container is made of recyclable materials, and can therefore be disposed of in an environmentally acceptable manner. At the end of the life cycle, the product should not be disposed of in the environment, but in a manner that is consistent with local regulations.

The materials of which the container is made are:

- 1- Polyethylene (inner and outer walls of the container and of the door)
- 2- Polyurethane (insulating material between the walls of the container and of the door, free of CFC and HCFC)
- 3- Silicone rubber (seal)
- 4 - Polyamide (cover and core of the castors)
- 5- Galvanized steel (hinge rods, metal plates connecting the hinge rods, supports for wheels and their screws and mounting washers)
- 6- Stainless steel (grips, closing rods, closing handle and related rivets, screws, nuts and washers, pins on hinge rod)
- 7- Aluminium (identification plates of the container and related rivets)
- 8- Plexiglass (card holders)

Thank you for buying a MELFORM product!



Right TEMPERATURE Worldwide



Via Savigliano 34 12030 Monasterolo di Savigliano (CN)
Tel. +39 0172812600 – info@melform.com
<http://www.melform.com>