



USE AND MAINTENANCE MANUAL

REV0 30/7/2023 PBCA0127GB

ISOTHERMAL CONTAINERS DRICY

INDEX

1. INTRODUCTION

- 1.1 Scope
- 1.2 Consulting the manual
- 1.3 Warranty

2. CAUTION

- 2.1 General recommendations

3. USE OF THE PRODUCT

- 3.1 Using the Product for the First Time
- 3.2 Handles Operating Instructions
- 3.3 Instructions for preparing the container before loading
- 3.4 Loading Instructions
- 3.5 Transportation Instructions

4. MAINTENANCE

- 4.1 Washing Instructions
- 4.2 Maintenance Instructions
- 4.4 Extraordinary maintenance
 - 4.4.1 Replacing the gasket
 - 4.4.2 Replacing the Wheels
- 4.5 Soldering Instructions

5. DISPOSAL

- 5.1 Packaging
- 5.2 Manufacturing materials

6. CERTIFICATIONS

1. INTRODUCTION

1.1 Scope of application

The Dricy isothermal container has been designed and manufactured for the maintenance and transport of dry ice, at the sublimation temperature of CO₂ (-78.5°C), or other temperature-controlled materials. It is suitable for all stages of transport, from harvesting in the field, to the processing industry, up to the distribution logistics platform and the transfer of the product to the end user.

1.2 Consultation of the manual

This manual has been organized in such a way as to allow users to easily and quickly find all the information necessary for the use and maintenance of the product. It is essential that the manual is available to maintenance personnel and operators at all times. Before putting the product into service, it is essential to read the operating instructions carefully.

1.3 Warranty

This product is covered by a 2-year warranty against manufacturing defects from the date of purchase, provided that:

- has been used in accordance with the manufacturer's instructions;
- has not been damaged due to improper use.

The warranty does not cover accidental damage caused by transport, negligence, misuse or misuse or deviation from what is stated in the operating instructions. The warranty is void if the product has been repaired or tampered with by an unauthorized third party.

For any assistance and for the supply of original spare parts, please contact your local distributor or MELFORM After-Sales Service at the email address customercare@melform.com

2. CAUTION

DRICY is an exclusive MELFORM product. The manufacturer reserves the right to make changes to the characteristics of the models at any time, without prior notice. There may be variations in color tones.

The product has been developed in accordance with current technological standards. All the necessary requirements have been met to ensure safe and proper operation of the appliance. It is recommended that personnel be properly trained so that the container is used only for its intended purposes by following the instructions in this manual.

2.1 General recommendations:

- The function of the Dricy container is to ensure the maintenance and transport of dry ice or other materials at a controlled temperature. Different functions or modes of use are therefore contraindicated
- The product is guaranteed to be used in a temperature range between -80°C and +85°C.
- Please note that the DRICY container is intended for use by adults and trained persons only and must be kept out of the reach of children.
- During transport, it is recommended to handle the container with care and to carefully follow the instructions given in this manual regarding the opening and closing of the doors. Personal protective equipment, such as work gloves, should be used during such operations in order to avoid the risk of pinching.

- It is recommended to periodically check the general condition of the container. In the event that breakage, damage or cracking is found, it is essential to suspend the use of the container to avoid compromising isothermal performance and the potential risk of contamination of the transported product. Also make sure that the door is closed properly.
- Warning: the lid of the container cannot be opened from the inside, so it is essential to avoid closing people or animals inside the container.
- It is not permitted to place the container in contact with pointed, sharp surfaces or expose it to direct heat sources, such as open flames.

IMPORTANT:

The manufacturer would like to emphasize that it declines all responsibility in the event that the user company does not comply with the accident prevention regulations in force. Please scrupulously take all required safety measures while using the product, in order to ensure a safe working environment for the personnel involved. Compliance with accident prevention regulations is essential to prevent accidents and protect the health and well-being of all operators.

Any plastic material is subject to embrittlement when subjected to extremely low temperatures, consequently it is recommended to avoid the use of metal objects for the removal of any residual ice/dry ice that may remain on the bottom of the container.

The operator using the product must be informed of the risks arising from improper use of the product, including: pinching, shocks, cold burn, asphyxiation, crushing. The correct use of the product by a trained and informed operator prevents and minimizes the above-mentioned risks.

3. USE OF THE PRODUCT

3.1 Using the Product for the First Time

The container was cleaned before being shipped from the factory. Before any use of the container, however, it is recommended to wash it in accordance with the procedures described in paragraph 4.1 "Washing instructions".

3.2 Handles Operating Instructions

1. With your hands, grasp the handles on the side of the container, located near the lid.



2. Grasp both handles and pry them up as shown below.



3. Rotate the lever until the metal ring can be removed from the hook attached to the cover.



4. After the lid is unlocked, release the handles and lift the lid by hand.

The lid must be closed by repeating the above steps in the opposite direction.

3.3 Instructions for preparing the container before loading

Normally there is no need to precondition the container; If you want to do this, leave the container open inside a cold room for a sufficiently long time. This is recommended if the container has been exposed to high ambient temperatures or the heat of the sun.

3.4 Loading Instructions

- Open the container as indicated in the instructions for use of the handle (section 3.2)
- During loading and unloading, it is advisable to apply the wheel brakes, if present.
- The function of the Dricy container is to ensure that it is kept at temperature. It is therefore essential to load the product inside the container at the desired temperature.
- It is advisable to load the container with a full load in order to have the best possible temperature preservation.
- Since the greatest amount of thermal energy is lost during the loading phase, it is advisable to carry out the operation in the shortest possible time, closing the lid immediately.
- The maximum recommended load for the container is 430kg for Dricy 540, 290kg for Dricy 360, 120kg for Dricy 150, 75kg for Dricy 90, 55kg for Dricy 65, 50kg for Dricy 60, 25kg for Dricy 30.
- To close the container, grasp the handles on the front wall of the container and repeat the steps in point 3.2.

3.5 Transportation Instructions

- Before handling the container, make sure the lid is closed.
- Move the container equipped with wheels by acting on the appropriate handles. During molding, a support plate is embedded in polyethylene, which makes the wheel attachment resistant to handling on uneven surfaces.

- Handle the container equipped with pallets by means of appropriate lifting systems (pallet trucks, forklifts).
Handling must be carried out by operators who are trained and informed of the risks involved.
- When handling the container, take the utmost care to avoid collisions with things or people.
- Do not use the container on inclined planes with manual handling. Always use lifting systems suitable for this purpose.
- In the event that multiple deliveries are made using the same container, avoid prolonged openings, as a large dispersion of thermal energy is caused each time.

4. MAINTENANCE

4.1 Washing Instructions

Clean the container regularly inside and out, following the instructions:

- The water temperature should not be higher than +85°C.
- Do not use metal or synthetic scouring pads, use only soft brushes with plastic or natural bristles.
- Do not use abrasive powders, ammonia, acids or solvents.
- Use soapy solutions or chemical cleaners, as long as they do not contain acetone, turpentine, solvent gasoline, acetic acid esters, ethanol, isopropanol and alcohol of higher molecular weight.
- All washed parts of the container should always be rinsed thoroughly. It is possible to use high-pressure water jets.
- For hygienic use, always dry the container with warm air or disposable paper (never reusable cloths) after washing.

4.2 Maintenance Instructions

Melform-Bonetto srl recommends regular maintenance of the container, in order to prevent any breakage, prolong its life and preserve its correct functioning.

We recommend:

- Have the container serviced by qualified technicians at least once a year.
- Always use original spare parts.

Contact your local distributor or Melform Sales Service for any assistance and for the supply of original spare parts.

Instructions on how to disassemble and reassemble any components that may be replaceable are provided below.

Detail to Check	Periodicity	Control Type
Wheels	3 months	Lift the container and check that it is correctly rotated, pivoted, cleaned, broken and worn tread.
Cover	6 months	<ul style="list-style-type: none"> • Opening and closing the lid must be smooth and frictionless. Lubricate moving parts with silicone or Teflon sprays to reduce friction and extend the life of mechanical parts • Check that the locking handles are working correctly • Check the state of conservation of the gasket around the entire perimeter • Check the state of the card holder if present. • Check the operation of the cover support pistons

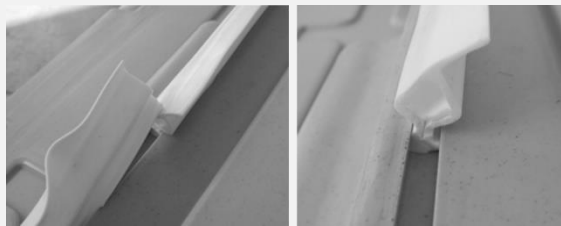
Detail to Check	Periodicity	Control Type
Bolts, screws, pins, rivets	6 months	Check the presence of all the screws supplied.
Body and lid: aesthetic verification	6 months	Check for cracks on the body and lid. Any breakage must be repaired as soon as possible by welding, to avoid degradation of the internal insulation (paragraph 4.5 "Welding instructions").
Moving parts	6 months	Lubricate all moving parts to avoid friction.

4.4 Extraordinary maintenance

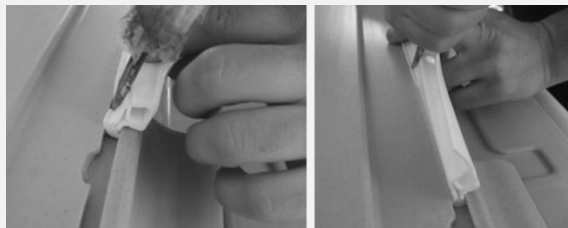
4.4.1 Replacing the gasket

Replace the gasket as follows:

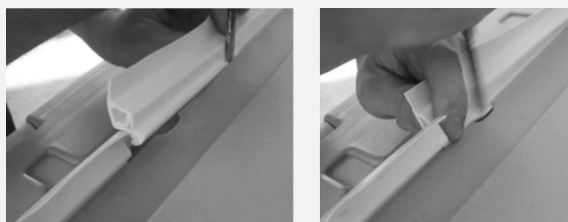
1 - Pull the gasket (A) out of its seat (inverted T-groove), pulling it outwards with finger pressure. Start by pulling out the gasket starting from the enlarged area of the lid.



2 - Insert the new gasket using a flat tool (e.g. slotted screwdriver), not sharp. Lubricate along the gasket for ease of insertion and start inserting the gasket starting from the enlarged area of the cover



3 - Cut the gasket to the correct length, so that the two flaps fit together

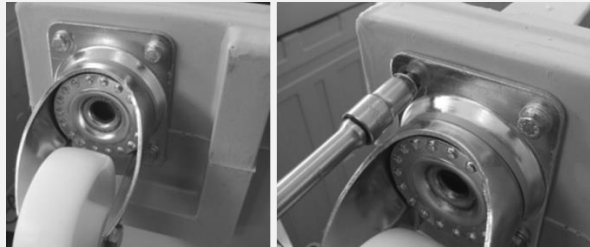


4.4.2 Replacing the Wheels

Replace the wheels as follows:

1 - Place the container on its back

2 - Unscrew the M8 screws and their washers



3 - Remove the affected wheel and replace with the new wheel



4 - Tighten the M8 screws and washers



In case of excessive tread wear, it is recommended to replace the four wheels.

4.4.3 Replacing the Latch Handle

Replace the latch handle by proceeding as follows:

1 - Lift the handle lever to the up position and remove the 2 Allen head screws, diameter M8x16 with their stainless steel groover washers



2 – If necessary, act in the same way with the hook fixed on the lid of the container, removing the two M8x16 locking screws with the relative stainless steel groover washers



Install the new handle and new lid hook by following the steps above, in the opposite direction.

4.4.4 Replacing the Cover Support Piston

Replace the support piston as follows:

1 – Remove the 4 screws from the metal locking cover, from both sides of the container



2 – Lift the cover and insert a suitable mechanical lock so that the cover remains open even after the piston has been removed. Then unscrew the 2 pairs of hexagon socket screws from each piston and remove it



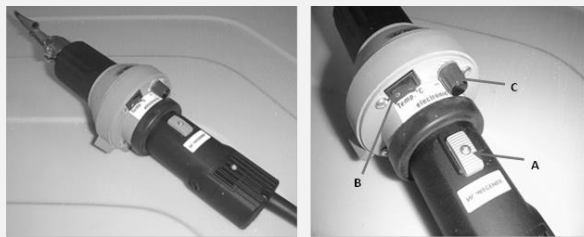


Do not remove the pistons with the cover open. The piston rods are in a naturally extended position, so the removal of the screws, and therefore the removal of the constraints and load, can result in a possible sudden release of the rod. The replacement operation must be carried out only in suitable safe conditions so that the cover does not generate a risk of pinching the limbs or injury to the operator.

4.5 Soldering Instructions

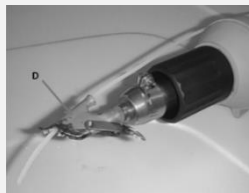
To weld polyethylene walls, we recommend the use of a WEGENER continuous wire welding machine (available on request), proceeding as follows:

- 1 - Connect the mains plug of the welding machine into the 230V power socket.
- 2 - Turn on the welding machine by setting the grey switch (A) to ON.
- 3 - Activate the heating elements by setting the black switch (B) to ON.
- 4 - Adjust the thermostat by setting the red knob (C) to position 5.



5 - Move the parts to be welded closer together. Place the spout of the welding machine in a closed position in contact with the parts to be welded and join them with several joints, using the jet of hot air.

6 - Rotate the nozzle backwards and insert the polyethylene wire for welding into the appropriate seat (D).



7 - Place the nozzle near the area to be welded and let the molten polyethylene settle. The drag speed of the welding machine is a function of the temperature set on the thermostat and the size of the part to be restored. Proceed until the area to be restored is completely saturated with molten polyethylene.



8 - To switch off the welding machine, set the red knob (C) of the thermostat to the value of 0, deactivate the heating elements by setting the black switch (B) to OFF, switch off the welding machine by setting the grey switch (A) to OFF and remove the mains plug from the 230V socket.

9 - Allow the polyethylene layer deposited on the area to be welded to cool for a few minutes.

10 - Remove the excess polyethylene deposited using a special deburring knife.



5. DISPOSAL

5.1 Packaging

The packaging material, consisting of cardboard and polyethylene film, is completely 100% recyclable. The user is responsible for the disposal of packaging material, and it is recommended that you follow local regulations regarding waste disposal.

For more information on proper disposal, you can contact your local waste disposal authority.

5.2 Manufacturing materials

The container is made of recyclable materials, allowing for environmentally friendly disposal at the end of its life cycle. At the time of disposal, it is essential to comply with local regulations for proper disposal of the product. The materials used for the construction of the body and the lid/door of the container are as follows:

1. Polyethylene: used for the inner and outer walls of the container and lid/door.
2. Polyurethane: insulating material between the walls of the container and the lid/door, free of CFCs and HCFCs.
3. Silicone rubber: used for gasket
4. Polyamide 6: Material used for the wheel ring.
- 5- Galvanized steel: material used for hinge rods, frame, wheel supports and related fixing screws and washers.
6. Stainless steel: used for the closing handles, the protection panels of the gas springs and the relative fixings.
7. Polycarbonate: Used for card holder.

6. CERTIFICATIONS

The container has undergone rigorous certification processes that confirm its high quality and safety. The following certifications attest to the compliance of the DRICY container with the highest standards:

1. HACCP: DRICY containers are suitable for use in HACCP environments, ensuring food risk control and maximum hygiene safety.

These certifications confirm that the DRICY container is designed and manufactured in such a way as to guarantee the highest quality and safety in the transport and storage of perishable food products.

Thank you for choosing a MELFORM product!



Via Savigliano 34, 12030 Monasterolo di Savigliano (CN) - ITALY
Tel. +39 0172812600 – info@melform.com
www.melform.com